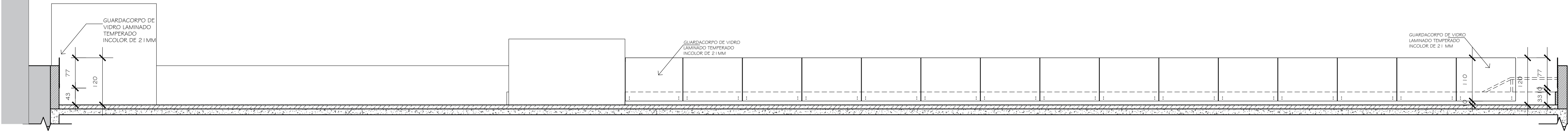
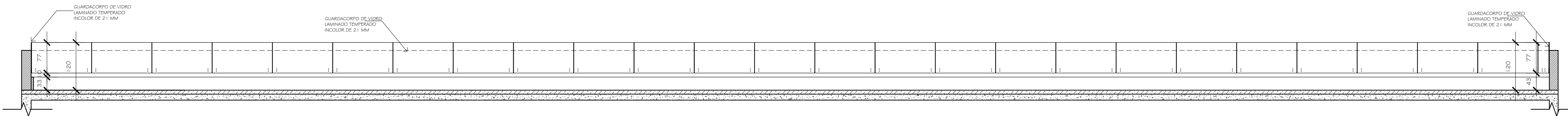


ANEXO I - B - PROJETO 02



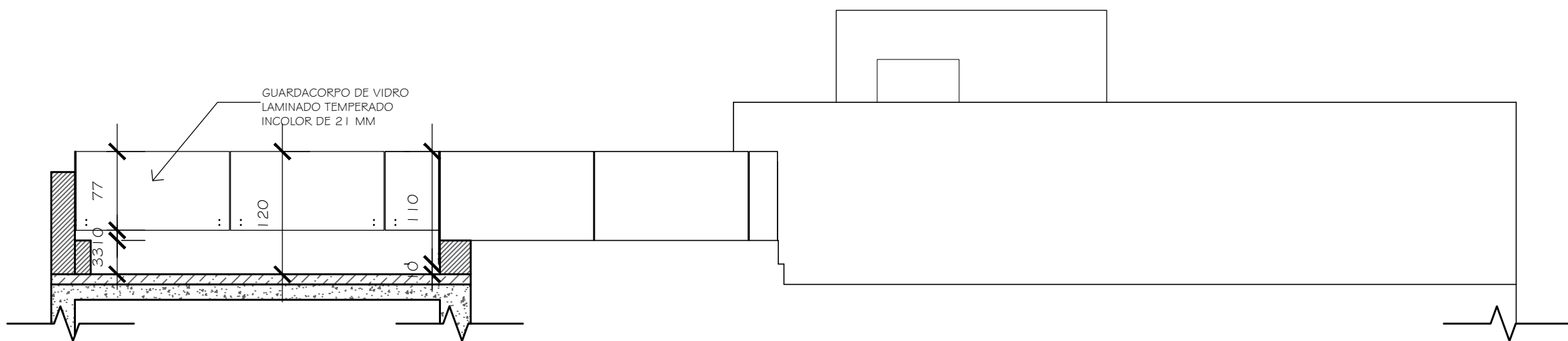
CORTE A-A'

ESCALA 1/50



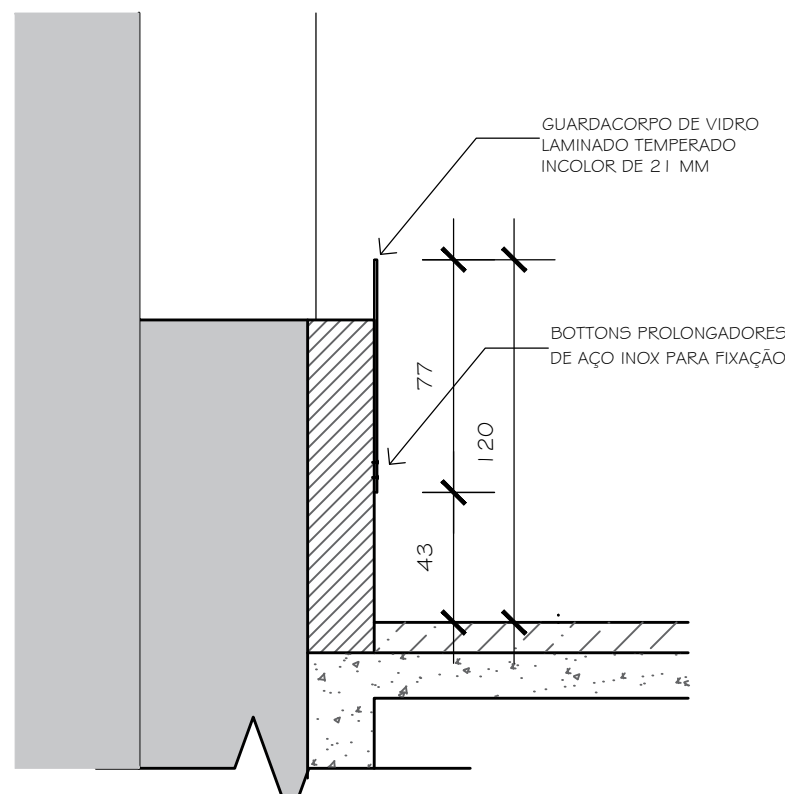
CORTE B-B'

ESCALA 1/50



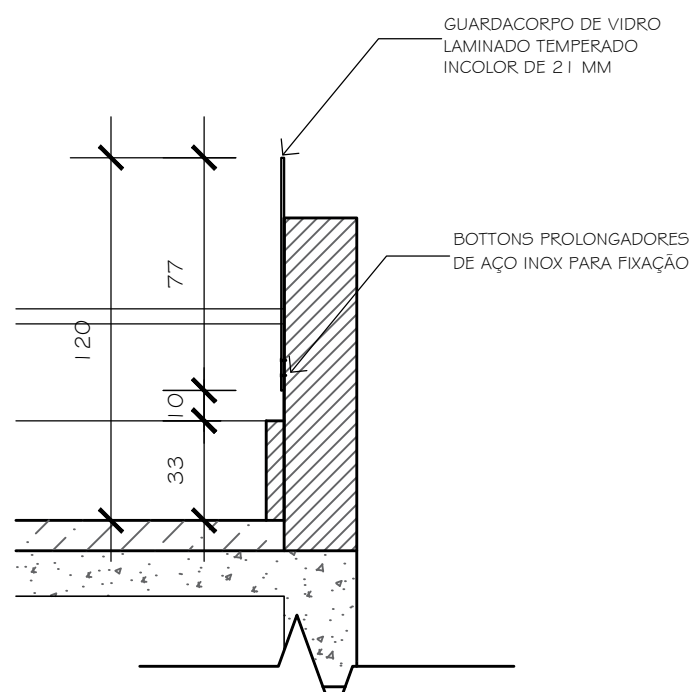
CORTE C-C'

ESCALA 1/50



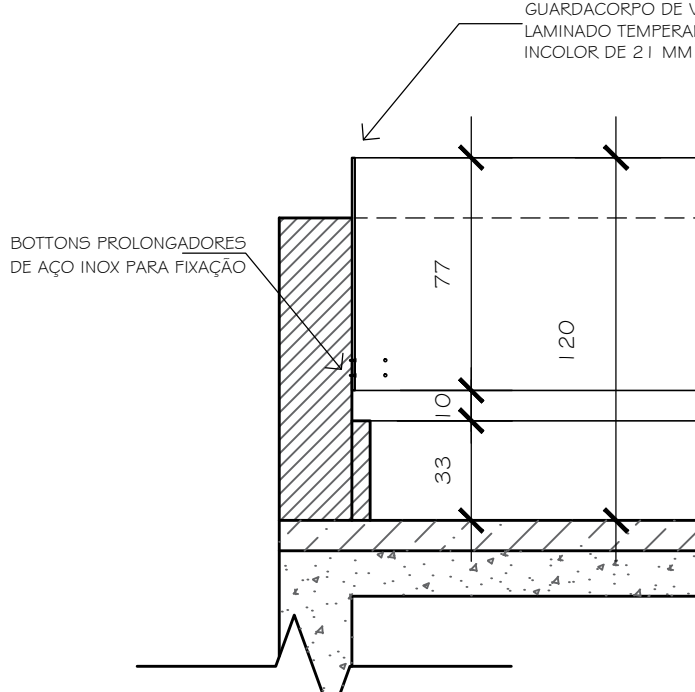
AMPLIAÇÃO CORTE A

ESCALA 1/25



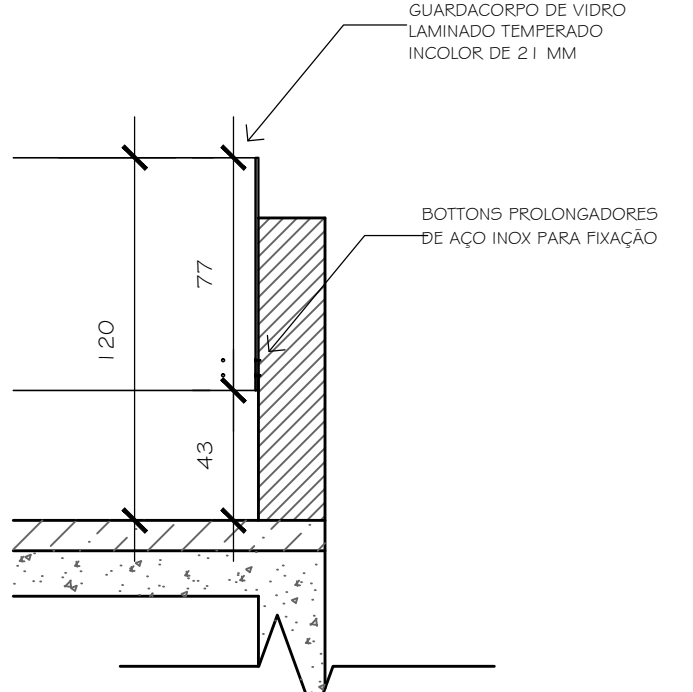
AMPLIAÇÃO CORTE A'

ESCALA 1/25



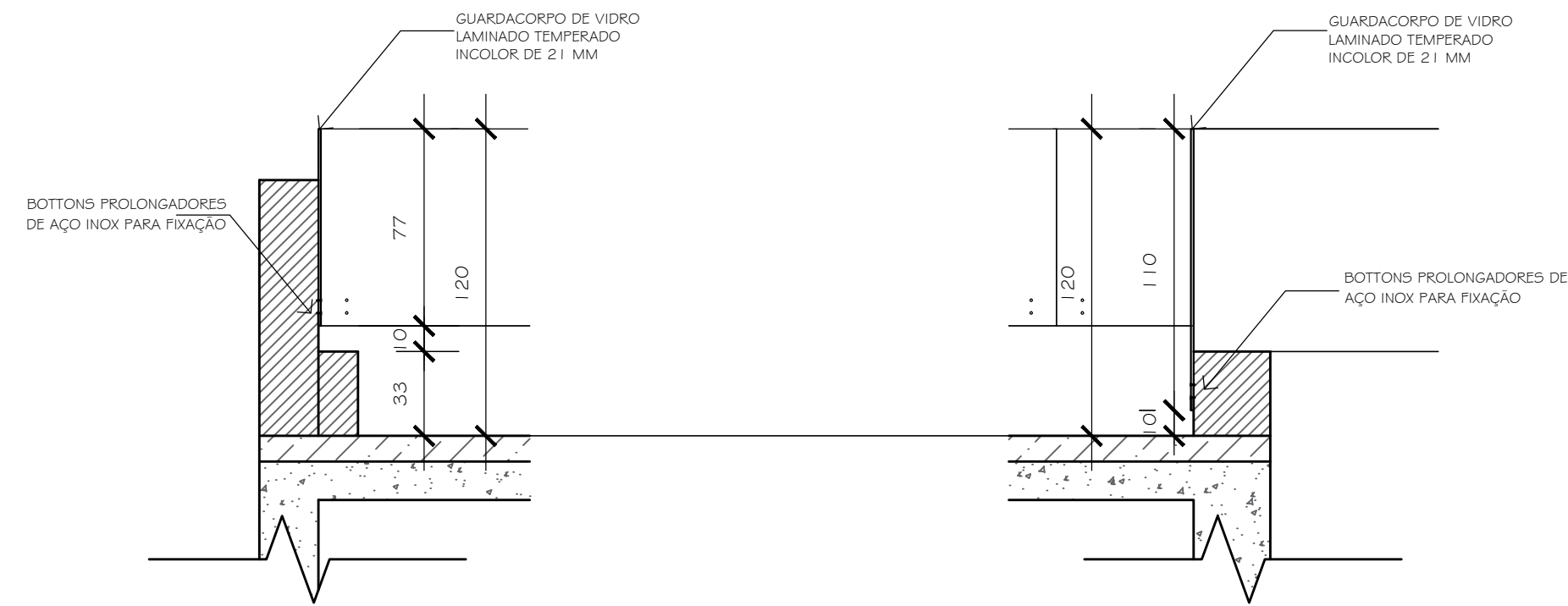
AMPLIAÇÃO CORTE B

ESCALA 1/25



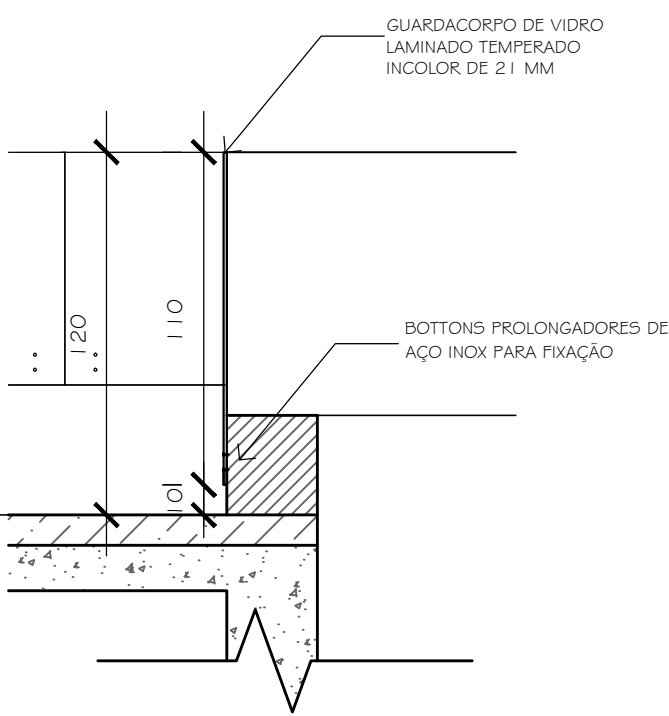
AMPLIAÇÃO CORTE B'

ESCALA 1/25



AMPLIAÇÃO CORTE C

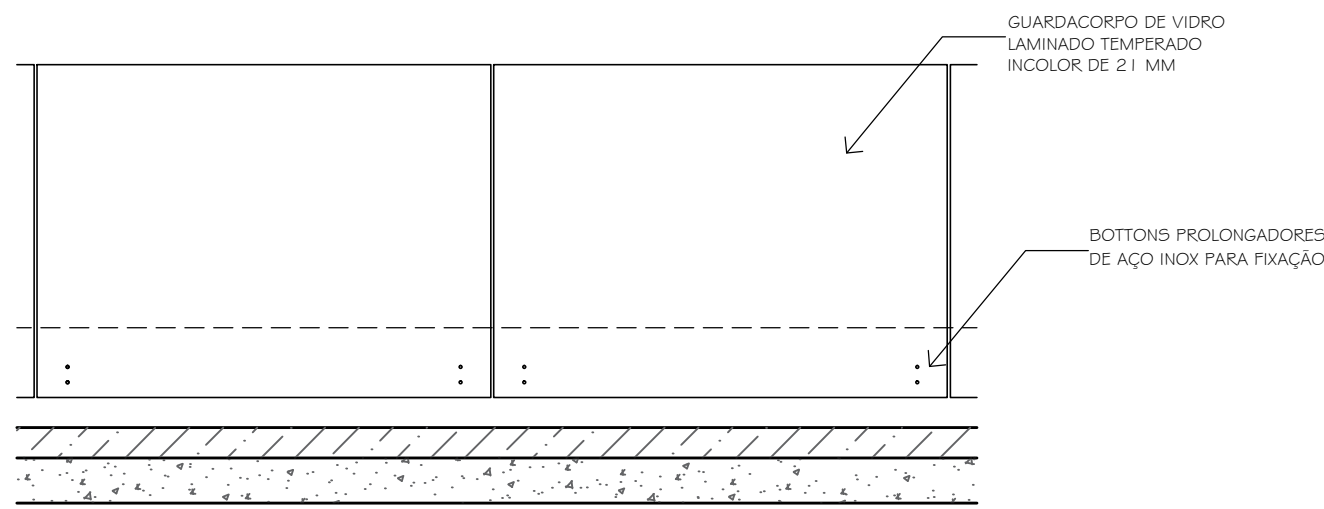
ESCALA 1/25



AMPLIAÇÃO CORTE C'

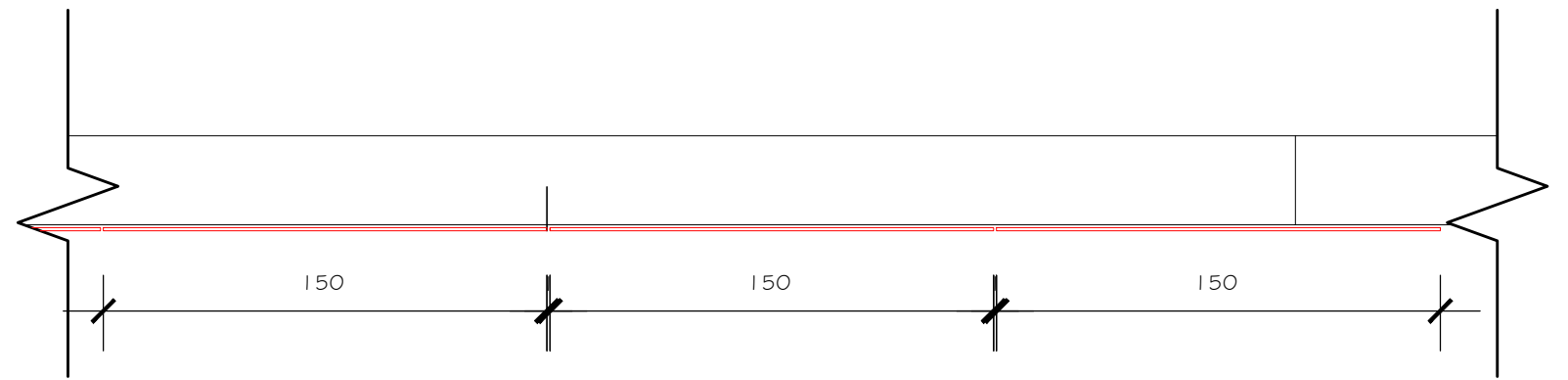
ESCALA 1/25

GUARDA-CORPO DE VIDRO




VISTA FRONTAL

ESCALA 1/25



PLANTA

ESCALA 1/25

 <div>PROCURADORIA GERAL DO ESTADO DO RIO DE JANEIRO</div>			
PROJETO DE ARQUITETURA			
OBRA: EDIFÍCIO SEDE DA PROCURADORIA GERAL DO ESTADO DO RIO DE JANEIRO			
ENDEREÇO: R. DO CARMO, 27 - CENTRO, RIO DE JANEIRO/ RJ			
GUARDA-CORPO - TERRAÇO			DATA: AGO/2021
TÍTULO: CORTE A-A' CORTE B-B' CORTE C-C'	AMPLIAÇÕES CORTES	DET. GUARDA-CORPO	FOLHA: 02/02
			REVISÃO: